

GARUDA

HYDRAULIC CYLINDERS

Manufacturers of **HYDRAULIC CYLINDERS**



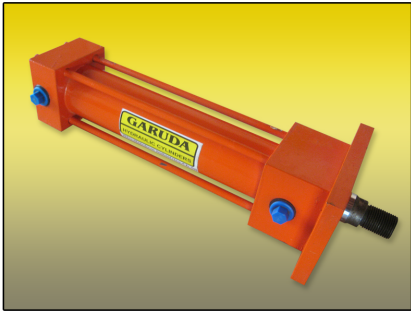
Foot Mount



Front Flange



Double End Rod



Tie - Rod



Intermediate Trunnion



Female Clevis

Cylinders offered in **Welded, Tie-Rod** and **Bolted Types**.

We can also make specific custom design cylinders to suit any application.

Ranges of Sizes: 32mm to 580mm Bore
Maximum Pressure: 300 Bar

Materials Spec for Hydraulic Cylinders

Cylinder Tube	: Honed tube of St52 BK grade
Piston Rod	: Hardchrome Rod of CK45 grade with 25 microns max 40 microns plating
Seals	: Imported German make
Mounting	: Mild Steel
Gland & Piston	: C45 single piece construction



Manufactured and Marketed by:

Metchem Industries

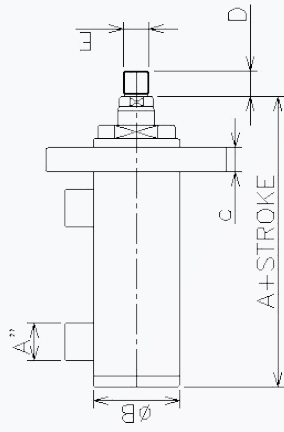
No. 86E, 2nd Main Road, Ambattur Industrial Estate, (Opp Rane Brakes)

Chennai - 600 058. **Phone:** 044-26233272 **Mobile:** 94444466788

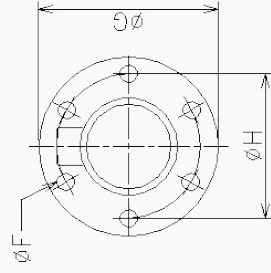
Email: garuda@metchemindustries.com **Web:** www.metchemindustries.com

STANDARD HYDRAULIC CYLINDERS

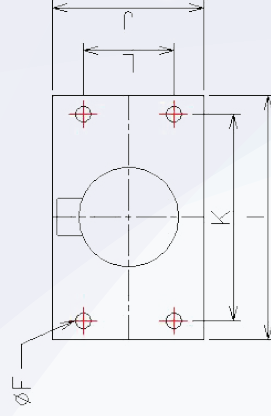
FRONT FLANGE



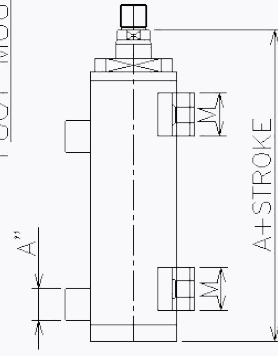
CIRCULAR FLANGE



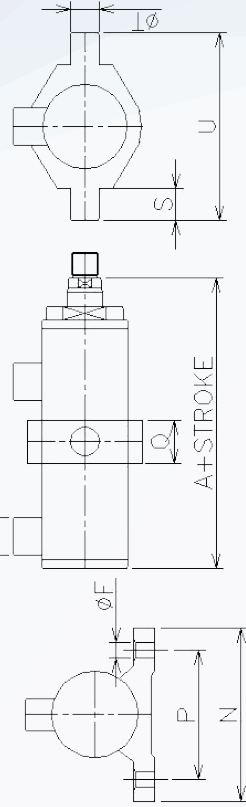
RECTANGULAR FLANGE



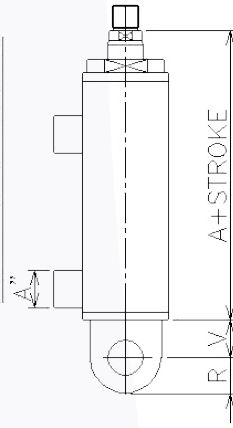
FOOT MOUNT



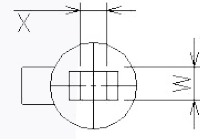
INTERMEDIATE TRUNNION



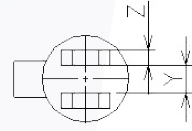
BOTH END CLEVIS



MALE CLEVIS



FEMALE CLEVIS



FOR STROKE >1000, 2000 CONSULT FACTORY,
ABOVE STANDARDS ARE FOR WELDED DESIGN CONSTRUCTION.

BORE	40	50	63	80	100	125	160	200
ROD	20	25	28	36	40	50	70	90
A	144	149	165	199	220	255	305	355
B	50	60	73	95	115	145	185	230
C	12	15	18	20	25	28	55	70
D	25	30	35	35	45	50	70	100
E	M16 X1.5	M18 X2	M24 X2	M30 X2	M36 X2	M56 X2	M80 X2	M90 X2
F	11	13	13	13	15	17	32	32
G	110	130	145	170	195	250	350	380
H	90	100	115	140	160	210	290	320
I	110	130	145	170	210	255	320	365
J	64	77	90	120	150	185	240	295
K	87	105	120	136	168	205	258	285
L	41	52	65	86	108	135	178	215
M	40	40	50	50	60	60	70	80
N	110	120	150	185	230	285	380	500
P	80	90	115	140	175	225	290	400
Q	30	35	45	50	55	60	70	100
R	25	30	35	40	50	60	95	125
S	20	25	35	40	45	50	65	80
T	20	25	35	40	45	50	60	80
U	105	130	165	200	240	285	390	440
V	30	35	40	50	60	70	100	115
W	20	25	32	40	45	50	80	100
X	20	25	30	35	45	50	80	90
Y	15	20	25	35	40	45	70	80
Z	10	10	10	15	15	15	25	32
A"	1" BSP 3/8"	1" BSP 3/8"	1" BSP 3/8"	1" BSP 1/2"	1" BSP 1/2"	1" BSP 3/4"	1" BSP 1"	1 1/2" BSP