

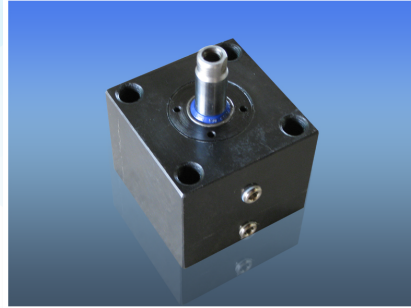
GARUDA

CLAMP CYLINDERS

Manufacturers of **CLAMP CYLINDERS**



Compact



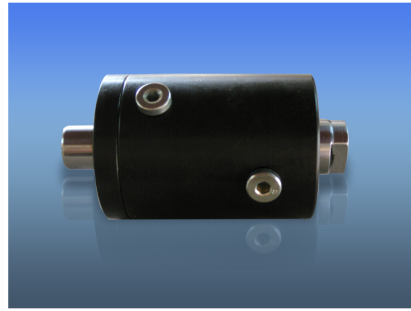
Block



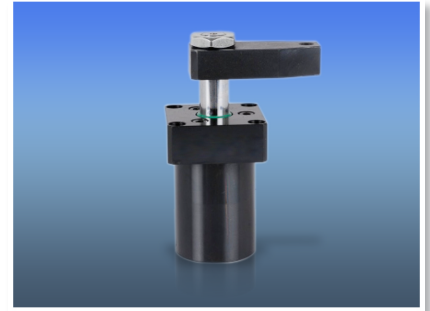
Tie Rod



Threaded Body



Hollow Piston



Swing Clamp

Cylinders offered in **Compact**, **Swing** and **Tie-Rod** Types.

We can also make specific custom design cylinders to suit any application.

Ranges of Sizes: 16mm to 100mm
Maximum Pressure: 250 Bar

Materials Spec for Clamp Cylinders

Cylinder Body	: MS (Mild Steel)
Piston Rod	: Standard Hardchrome plated Rod of CK45 or EN8 grade
Seals	: Imported German make



Manufactured and Marketed by:

Metchem Industries

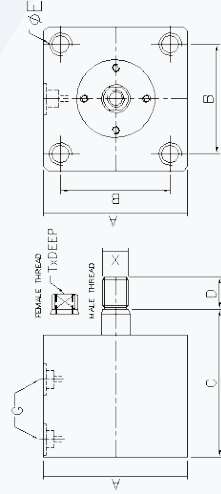
No. 86E, 2nd Main Road, Ambattur Industrial Estate, (Opp Rane Brakes)

Chennai - 600 058. **Phone:** 044-26233272 **Mobile:** 94444466788

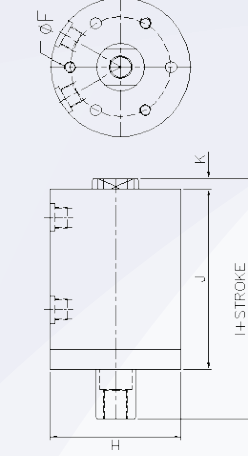
Email: garuda@metchemindustries.com **Web:** www.metchemindustries.com

STANDARD CLAMPING CYLINDERS

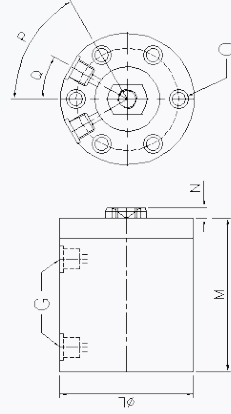
BLOCK CYLINDER



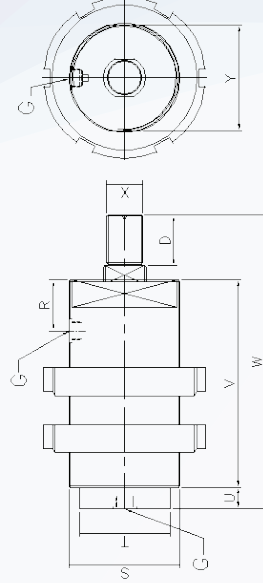
HOLLOW PISTON CYLINDER



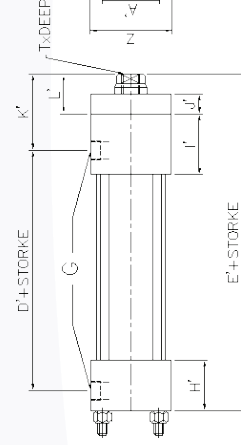
COMPACT CYLINDER



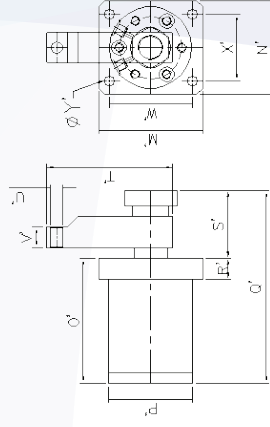
MINI THREADED CYLINDER



TIE ROD CYLINDER



SWING CLAMP CYLINDER



FOR STROKE >500 CONSULT FACTORY,
ABOVE STANDARDS ARE FOR TIE ROD, THREADED DESIGN CONSTRUCTION.

BORE		16	20	32	40	50
ROD		12	16	16/20	20/25	25/32
A		60	65	75	85	100
B		40	50	55	62	76
C		65	70	82	82	96
D		18	18	22	28	36
E	M10STD	M12STD	M12STD	M12STD	M12STD	M16STD
F	M4STD	M6STD	M6STD	M6STD	M8 STD	M8 STD
G	$\frac{3}{8}$ "BSP	$\frac{3}{8}$ "BSP	$\frac{3}{8}$ "BSP	$\frac{3}{8}$ "BSP	$\frac{3}{4}$ "BSP	$\frac{3}{4}$ "BSP
H	35	55	65	65	80	102
I	80	110	125	145	165	165
J	50	80	90	105	115	115
K	5	5	5	10	10	10
L	35	45	65	76	95	95
M	45	53	59	67	73	73
N	10	10	10	10	10	10
O	4	4.5	6.6	9	11	11
P	60°	60°	60°	60°	60°	60°
Q	30°	30°	30°	30°	30°	30°
R	24	26	26	28	30	30
S	M36x1.5	M39x1.5	M48x2	M60x2	M65x2	M65x2
T	30	35	45	55	60	60
U	6	6	8	8	9	9
V	108	115	117	118	122	122
W	141	147	156	163	180	180
X	M10STD	M14STD	M16STD	M20STD	M24STD	M24STD
Y	34	36	46	58	62	62
Z	30	40	45	63	75	75
A'	20	27	33	41	52	52
B'	42	51	64	87	105	105
C'	60	65	80	110	130	130
D'	52	56	50	83	92	92
E'	116	118	120	160	175	175
F'	5.5	5.5	7	11	13	13
H'	25	25	25	28	32	32
I'	30	30	30	40	42	42
J'	10	10	10	10	16	16
K'	50	50	65	62	67	67
L'	25	25	45	35	41	41
M'	40	50	80	100	125	125
TxD	M6x12	M8x15	M10x20	M16x25	M20x30	M20x30
N'	35	45	75	90	115	115
O'	50	70	130	135	170	170
P'	32	40	64	80	100	100
Q'	70	100	185	200	250	250
R'	20	20	20	20	20	20
S'	45	30	55	65	80	80
T'	50	60	100	120	150	150
U'	M6STD	M8STD	M10STD	M12STD	M16STD	M16STD
V'	10	15	15	20	25	25
W'	32	40	64	80	100	100
X'	28	35	56	70	88	88
Y'	4	5	8	10	12	12